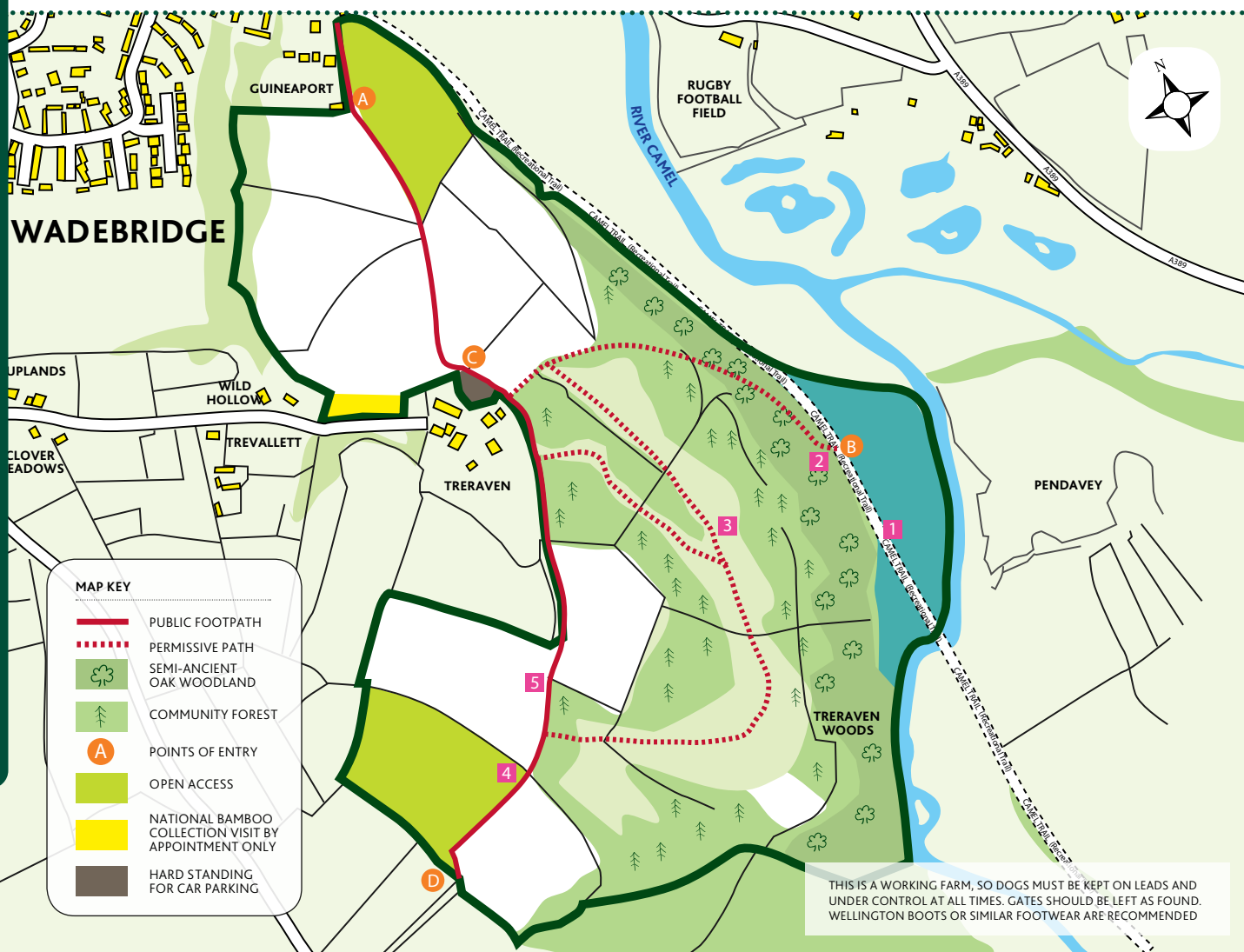


# Walking route around Treraven Farm



## Point 3: Community forest & open pastures

Permissive paths lead across open pasture with stunning views over North Cornwall. The surrounding community forest of native broadleaved trees including guelder rose, spindle, dogwood, hazel and hawthorn. Planted with local volunteer help, these look magnificent in autumn.

LOOK OUT FOR: SPINDLE



## Point 4: Weed margins & farm track

Field reverted back to pasture from arable, but margin is still cultivated to encourage rare arable weeds & annuals to germinate. It is one of two fields with open public access, in addition to permissive paths and tracks.

LOOK OUT FOR: FIELD PANSY



## Point 5

The bridlepath and farm track is typical of the sunken tracks that have been used for many generations. The steep sides are rich with ferns and flowers, especially primroses, snowdrops and violets in early spring.

LOOK OUT FOR: HARTS TONGUE FERN



## Point 1: Restoration of saltwater meadows

Part of a joint vision to restore Wadebridge's tidal floodplain, in 2007 the first floods entered Treraven's meadows for over 100 years. Cattle graze the meadows in summer, allowing natural habitat such as salt marsh to develop, benefitting species such as otter, kingfisher, lapwing, avocet and curlew. There is currently no public access to the meadows but they can be viewed from the Camel Trail.

LOOK OUT FOR: OTTER, KINGFISHER



## Point 2: Upland oak woods

A steep permissive passes through woodland, affording scenic glimpses over the River Camel. In late spring, bluebells carpet the woods, along with wood anemone and wild garlic, and many other flowering plants, ferns, mosses, lichens and fungi can be found throughout the year.

LOOK OUT FOR: BLUEBELLS, SPRING FLOWERS



## Chark Moor

CHARK MOOR is part of the Mid-Cornwall Moors. It supports a rich mosaic and diversity of wetland habitat types for a small area, supporting uncommon plant species and flowering plants of local interest. Although not currently present, Chark supports suitable breeding habitat for the endangered Marsh Fritillary butterfly, which it is hoped will colonise the site from nearby breeding colonies in the near future. This is a difficult site to access, and the terrain makes it unsuitable for pleasurable walking. Great care should be taken at all times.



For further information visit the Gaia Trust's website at [www.gaiatrust.org.uk](http://www.gaiatrust.org.uk)



## Treraven Farm

Treraven Farm consists of 69 ha adjoining the River Camel and the Camel Trail, and runs down to the attractive and thriving market town of Wadebridge.

Bordering the Camel Trail and River Camel, the reserve has 35 acres of ancient woodland carpeted with bluebells and a haven for dormice. With local help, the Trust has planted a further community forest of native broadleaf trees. Permissive paths have been created that connect the Camel Trail and an existing public footpath running through the farm from Wadebridge to St Breock Downs to provide some delightful circular walks. The remainder of the land is permanent pasture, run along organic lines and within an Environmental Stewardship Scheme to enhance biodiversity and sustainability.

The Trust welcomes educational visits and help from many local organisations. However, visitors should remember that this is a working farm, and appropriate footwear should be worn. Dogs are only permitted on a lead, and are not permitted at all on the saltwater meadows as the main aim of salt marsh project is to encourage breeding and overwintering birds.

**Location:** North Cornwall; Grid Ref SW997714  
Access is from the Camel Trail, parking at Guineaport, Wadebridge, or from the parking place marked on the Treraven Farm map.

The acquisition of this land was made possible with the help of:

Heritage Lottery Fund; The Will Trust; Esmee Fairbairn Trust; Lankelly Trust; Ernest Cook Trust; County Environmental Trust; Alan Evans Trust; Four Winds Trust; Hamamelis Trust; Inverforth Trust; John Spedan Lewis Foundation; Wadebridge Rotary Club.

The Gaia Trust encourages volunteering groups and local involvement at Treraven Farm. The Trust is particularly keen to extend the experience of the land to those groups traditionally excluded, either from disability or social disadvantage. Our aim is to make the countryside we manage user-friendly to visitors - and visitor friendly to the people who farm the land.

## The Gaia Trust

Conservation alone is not enough - bringing nature and people together

The Gaia Trust, a registered charity (No. 800302) founded in 1988, works to forge a lasting alliance between communities and their surrounding open spaces. The Trust acts to protect an attractive and viable countryside by promoting sustainable farming, and other land uses, giving local communities a central involvement in their stewardship. Creation of habitats and wildlife conservation in partnership with appropriate public access are central to the way in which the Trust manages its land.

### Treraven Farm - Wadebridge, Cornwall

The Gaia Trust acquired Treraven Farm in 1999 with the generous support of the Heritage Lottery Fund, other trusts and individuals. With the help of Defra's Environmental Stewardship Scheme and the Forestry Commission, Gaia is working to enhance Treraven's biodiversity with reversion to permanent pasture and saltwater meadows, and the creation of a community forest.

### How can you help?

The Gaia Trust welcomes donations to enable it to manage existing properties and to acquire additional areas of farm and woodland. Volunteers are crucial to our work, and we would welcome your support and involvement. As well as Treraven Farm, the Gaia Trust also owns Chark Moor in Mid Cornwall, and Home Farm Marsh in North Devon.

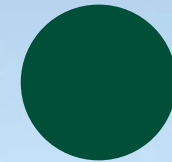


For further information visit the Gaia Trust's website [www.gaiatrust.org.uk](http://www.gaiatrust.org.uk), or contact us at:

**The Gaia Trust**, Lambourne House  
Mount Hawke, Truro, Cornwall, TR4 8DH

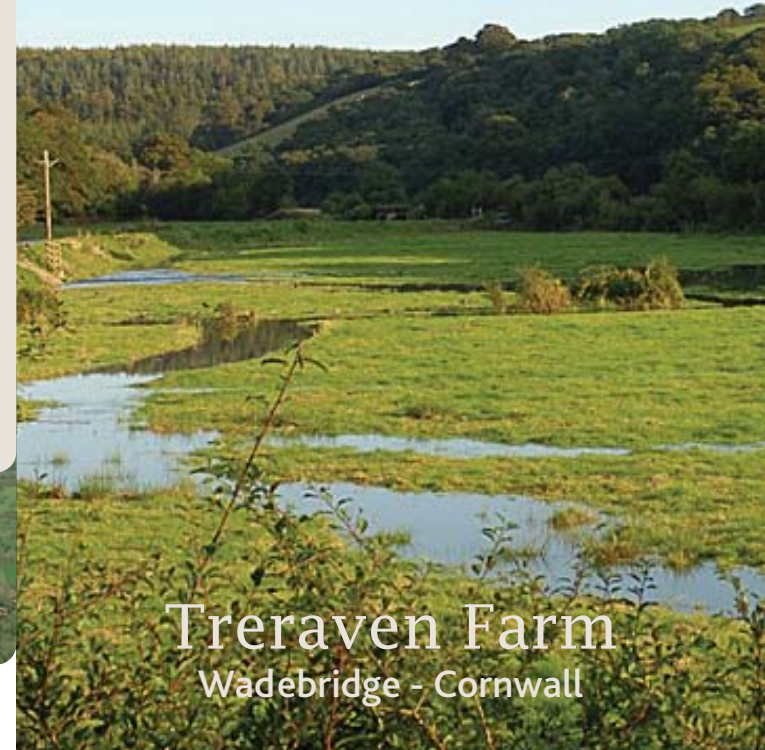
Telephone: 01209 890696  
E-mail: [alisonvaughan@gaiatrust.org.uk](mailto:alisonvaughan@gaiatrust.org.uk)  
Website: [www.gaiatrust.org.uk](http://www.gaiatrust.org.uk)

Registered charity address:  
The Gaia Trust, Deli Farm, Delabole PL33 9BZ Tel: 01840 214100



## The Gaia Trust

BRINGING NATURE AND PEOPLE TOGETHER



## Treraven Farm Wadebridge - Cornwall

**Environment**  
Protecting a viable,  
self-sustaining countryside

**Community**  
Involving local people in  
landscape management

**Education**  
Opportunities for training  
in new skills

**Wildlife**  
Conserving habitats for  
animals and plants